

# Mobile Home Displacement

A photograph of a mobile home park. In the foreground, there are several mobile homes with white siding and blue accents. A large palm tree is on the left side. In the background, there is a large, multi-story apartment building with a modern design, featuring a mix of grey, red, and yellow colors. The sky is clear and blue. The text "Mobile Home Displacement" is overlaid in white on the image.



## Panel

- Cindy Stotler
- Anna Maria Maldonado
- Lisa Scouten

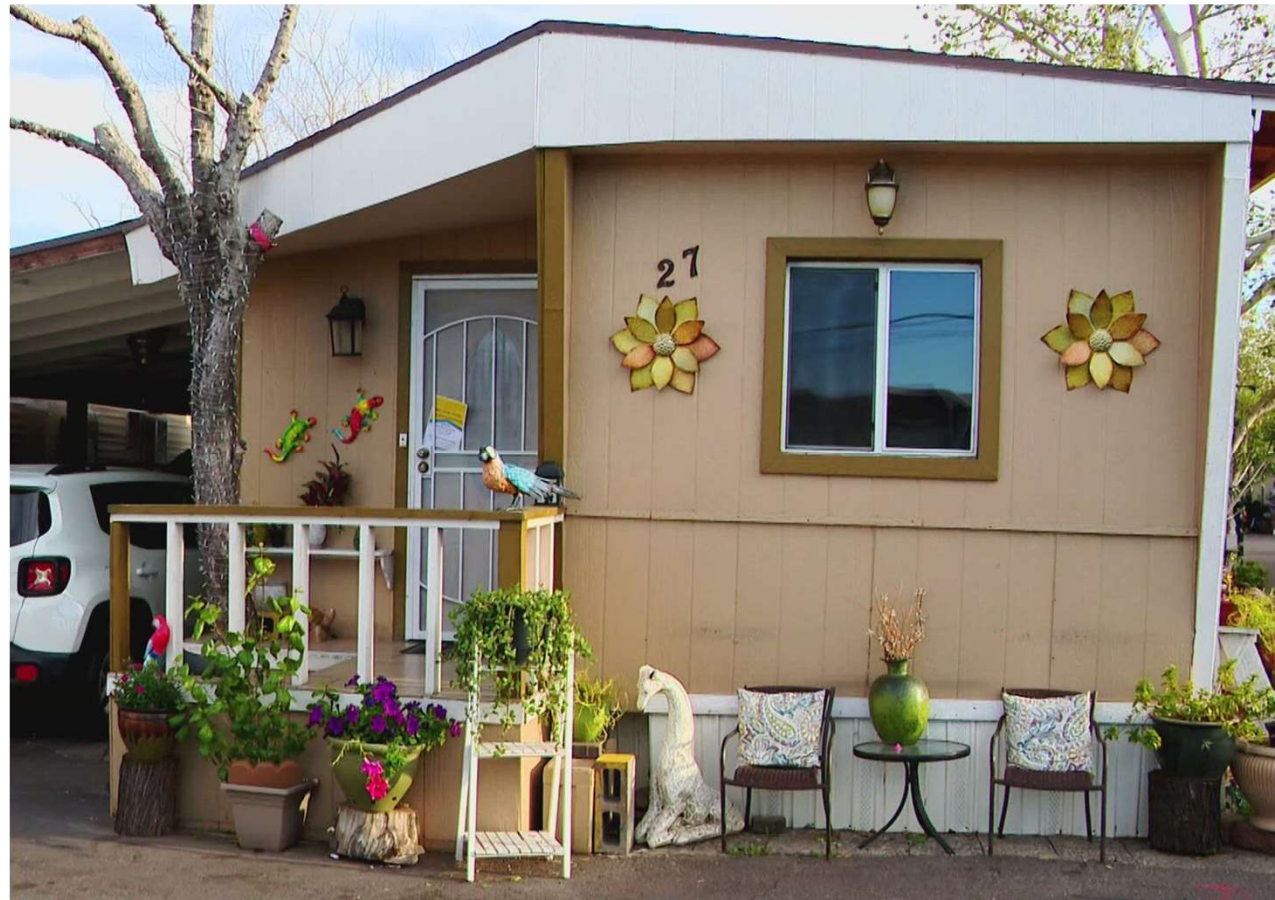
# Mobile Home Communities

- 10% of Arizona's Housing Stock
- 20,000 mobile homes in Phoenix
- Affordable rent \$600/month
- 30 parks have sold in Maricopa County since 2021



# Mobile Home Communities

- Families
- Essential Workers
- Seniors
- Veterans



# Mobile Home Displacement

- 3 Park Closures in 2022/23
- Over 130 households displaced
- [Mobile Housing \(vimeo.com\)](https://www.vimeo.com/711111111)



# Park Closures

---

- 180 Days Notice
- Mobile Home Relocation Fund
  - Abandonment - \$5,000 to \$8,000
  - Relocation - \$12,000 to \$20,000



# Relocation Assistance

---

- City of Phoenix \$2.5 million
- Phoenix IDA
- Helping Families in Need



**MOBILE HOME PARK  
RESIDENTS WORRIED**



Our Experience



## Summary

- 130 Households Served
  - 95 Families with Children
- 393 Individuals
  - 195 Female head of household
  - 384 Identified as Hispanic/Latino



## What can we do?

- Increase Awareness
- Changes in Zoning
  - ✓ Increase density at existing parks
  - ✓ Allow new parks less than 10 acres
  - Overlays to maintain parks
- Changes in State Law
  - Longer notification timeframe
  - Requirement to relocate residents
  - Resident-Owned Communities
  - Tenant Opportunity to Purchase Act

